

DOORS ARE NOT RATED FOR IMPACT.  
 INSTALLATION OF THIS PRODUCT IN THE HVHZ AREA DOES REQUIRE THE USE OF APPROVED SHUTTIERS OR EXTERNAL PROTECTION DEVICES COMPLYING WITH HVHZ REQUIREMENTS.  
 INSTALLATION OF THIS SYSTEM OUTSIDE THE HVHZ AREA SHALL MEET THE APPLICABLE REQUIREMENTS FOR WIND BORNE DEBRIS PROTECTION.

**"TELSTAR/TIOGA/SPARTAN" OUTSWING STEEL DOORS SYSTEM**

APPROVAL APPLIES TO SINGLE (X) LEAF DOORS WITHOUT SIDELITES.

DOORS NOT APPROVED FOR INSTALLATIONS WHERE WATER INFILTRATION RESISTANCE IS REQUIRED.

THIS PRODUCT HAS BEEN DESIGNED AND TESTED TO COMPLY WITH THE REQUIREMENTS OF THE CURRENT EDITION FLORIDA BUILDING CODE INCLUDING HIGH VELOCITY HURRICANE ZONE (HVHZ).

WOOD BUCKS BY OTHERS, MUST BE ANCHORED PROPERLY TO TRANSFER LOADS TO THE STRUCTURE.

ANCHORS SHALL BE AS LISTED, SPACED AS SHOWN ON DETAILS, ANCHORS EMBEDMENT TO BASE MATERIAL SHALL BE BEYOND WALL DRESSING OR STUCCO.

ANCHORING OR LOADING CONDITIONS NOT SHOWN IN THESE DETAILS ARE NOT PART OF THIS APPROVAL.

A LOAD DURATION INCREASE IS USED IN DESIGN OF ANCHORS INTO WOOD ONLY.

ALL SHIMS TO BE HIGH IMPACT, NON-METALLIC AND NON-COMPRESSIBLE.

MATERIALS INCLUDING BUT NOT LIMITED TO STEEL/METAL SCREWS, THAT COME INTO CONTACT WITH OTHER DISSIMILAR MATERIALS SHALL MEET THE REQUIREMENTS OF THE CURRENT EDITION FLORIDA BUILDING CODE.

MANUFACTURER'S LABEL SHALL COMPLY WITH AND BE LOCATED ON A READILY VISIBLE LOCATION IN ACCORDANCE WITH THE CURRENT EDITION FLORIDA BUILDING CODE FLORIDA BUILDING CODE.

NOTE:  
 EGRESS REQUIREMENTS TO BE REVIEWED BY AHJ.

**"TELSTAR" OUTSWING SINGLE STEEL DOORS (X)**

A- THIS PRODUCT EVALUATION DOCUMENT (P.E.D.) PREPARED BY THIS ENGINEER IS GENERIC AND DOES NOT PROVIDE INFORMATION FOR A SITE SPECIFIC PROJECT; i.e. WHERE THE SITE CONDITIONS DEVIATE FROM THE P.E.O.  
 B- CONTRACTOR TO BE RESPONSIBLE FOR THE SELECTION, PURCHASE AND INSTALLATION OF THIS PRODUCT BASED ON THIS PRODUCT EVALUATION PROVIDED HE/SHE DOES NOT DEVIATE FROM THE CONDITIONS DETAILED ON THIS DOCUMENT.  
 C- THIS PRODUCT EVALUATION DOCUMENT WILL BE CONSIDERED INVALID IF ALTERED BY ANY MEANS.  
 D- SITE SPECIFIC PROJECTS SHALL BE PREPARED BY A FLORIDA REGISTERED ENGINEER OR ARCHITECT WHICH WILL BECOME THE ENGINEER OF RECORD (E.O.R.) FOR THE PROJECT AND WHO WILL BE RESPONSIBLE FOR THE PROPER USE OF THE P.E.D. ENGINEER OF RECORD, ACTING AS A DELEGATED ENGINEER TO THE P.E.D. ENGINEER SHALL SUBMIT TO THIS LATTER THE SITE SPECIFIC DRAWINGS FOR REVIEW.  
 E- THIS P.E.D. SHALL BEAR THE DATE AND ORIGINAL SEAL AND SIGNATURE OF THE PROFESSIONAL ENGINEER OF RECORD THAT PREPARED IT.

PERFORMANCE RATING	
DESING PRESSURE RATING	IMPACT RATING
+/- 50 PSF	NONE
THIS SYSTEM WAS NOT TESTED FOR WATER INFILTRATION AND IS TO BE INSTALLED ONLY WHERE THE WATER REQUIREMENT IS NOT NEEDED INCLUDING BUT NOT LIMITED TO AREAS WITH OVERHANGS MEETING CURRENT EDITION FLORIDA BUILDING CODE REQUIREMENT OF OVERHANG LENGTH/OVERHANG HEIGHT ≥ 1.0.	

TELL MANUFACTURING, INC.  
 18 RICHARD DRIVE, LITITZ, PA 17543

TELL MFG

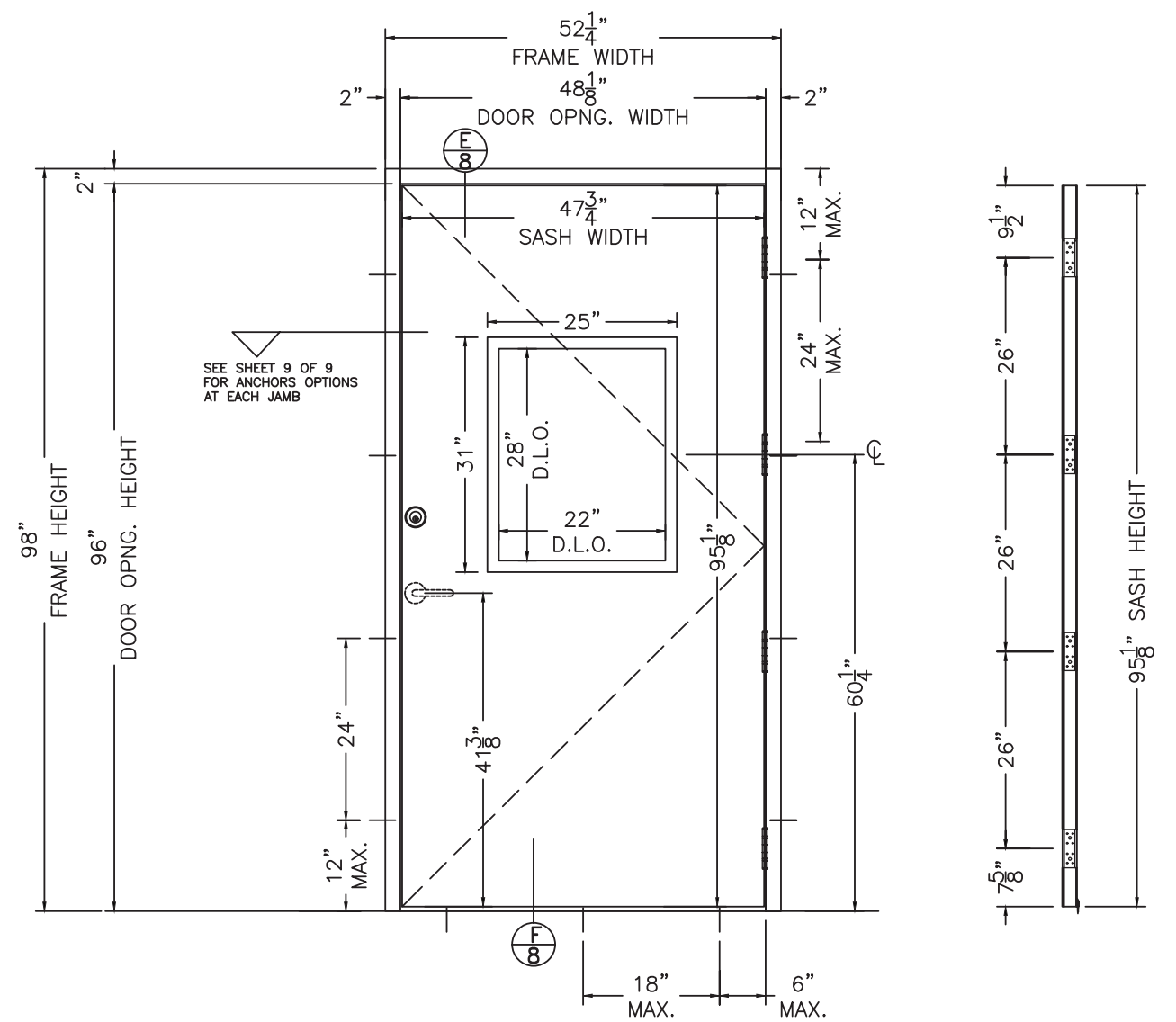
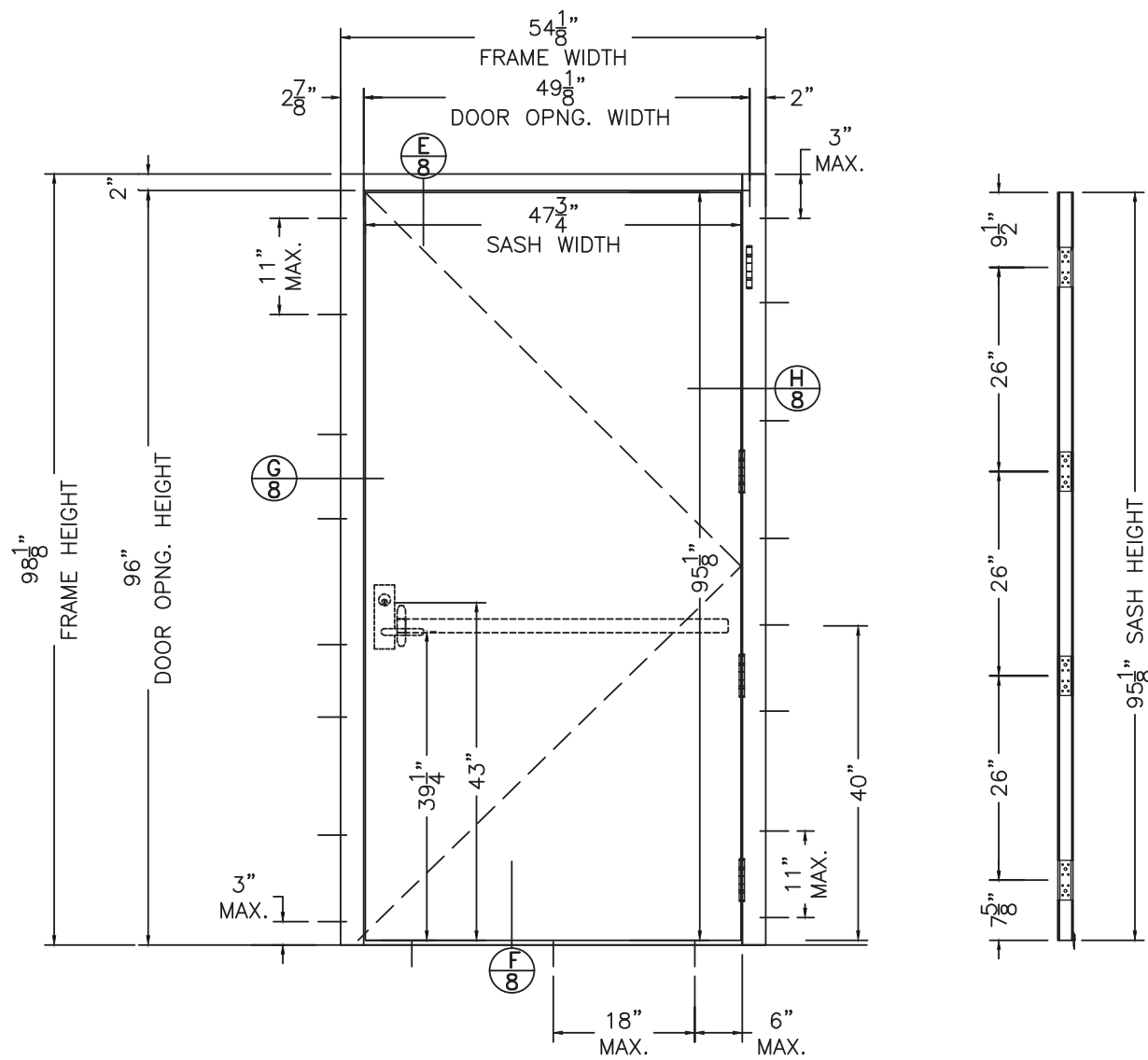
**Spectrum Brands** | Hardware & Home Improvement

THIS DOCUMENT IS THE PROPERTY OF SPECTRUM BRANDS, INC. AND/OR ITS AFFILIATES. THE CONTENTS OF THIS DOCUMENT ARE CONFIDENTIAL AND CONSTITUTE TRADE SECRETS PROPRIETARY TO SPECTRUM BRANDS. NEITHER THIS DOCUMENT NOR ITS CONTENTS SHALL BE DISCLOSED TO ANY UNAUTHORIZED PERSON, COPIED, OR PUBLISHED WITHOUT SPECTRUM BRANDS' PRIOR WRITTEN CONSENT.

Robert J. Amoruso, P.E.  
 Florida P.E. No. 49752

PTC PRODUCT DESIGN GROUP, LLC  
 PO BOX 520775 | LONGWOOD, FLORIDA 32752  
 FBPE C.A. NO. 25935  
 Phone: 321.690.1788 | Email: info@ptc-corp.com

DRAFTER	DATE	TELL DOORS & WINDOWS, LLC. 6535 GUHN RD, STE 100, HOUSTON, TX 77040	
CHECKED	DATE	TITLE "TELSTAR/TIOGA/SPARTAN" DS STEEL DOORS SYSTEM-N.I.	
ENGINEER	DATE	SIZE B	DWG NO 15-35
APPROVED R.J.A.	DATE 10/17/23	RELEASE STATE FINAL	REV ITER B
THIRD ANGLE PROJECTION 	SCALE 1/2"=1'-0"	SHEET 1 OF 9	



"TIOGA/SPARTAN" OUTSWING SINGLE STEEL DOORS (X)

PERFORMANCE RATING	
DESIGN PRESSURE RATING	IMPACT RATING
+/- 75 PSF	NONE
THIS SYSTEM WAS NOT TESTED FOR WATER INFILTRATION AND IS TO BE INSTALLED ONLY WHERE THE WATER REQUIREMENT IS NOT NEEDED INCLUDING BUT NOT LIMITED TO AREAS WITH OVERHANGS MEETING CURRENT EDITION FLORIDA BUILDING CODE REQUIREMENT OF OVERHANG LENGTH/OVERHANG HEIGHT ≥ 1.0.	

"TIOGA/SPARTAN" OUTSWING SINGLE STEEL DOORS (X)

PERFORMANCE RATING	
DESIGN PRESSURE RATING	IMPACT RATING
+/- 50 PSF	NONE
THIS SYSTEM WAS NOT TESTED FOR WATER INFILTRATION AND IS TO BE INSTALLED ONLY WHERE THE WATER REQUIREMENT IS NOT NEEDED INCLUDING BUT NOT LIMITED TO AREAS WITH OVERHANGS MEETING CURRENT EDITION FLORIDA BUILDING CODE REQUIREMENT OF OVERHANG LENGTH/OVERHANG HEIGHT ≥ 1.0.	

Robert J. Amoruso, P.E.  
Florida P.E. No. 49752



PTC PRODUCT DESIGN GROUP, LLC  
PO BOX 520775 | LONGWOOD, FLORIDA 32752  
FBPE C.A. NO. 25935  
Phone: 321.690.1788 | Email: info@ptc-corp.com

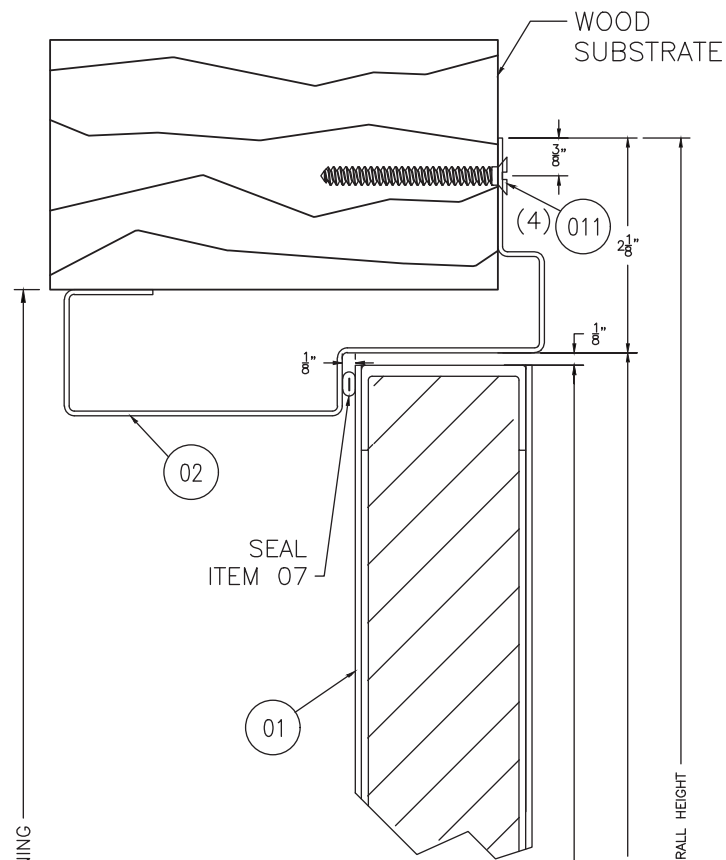
TELL MANUFACTURING, INC.  
18 RICHARD DRIVE, LITITZ, PA 17543



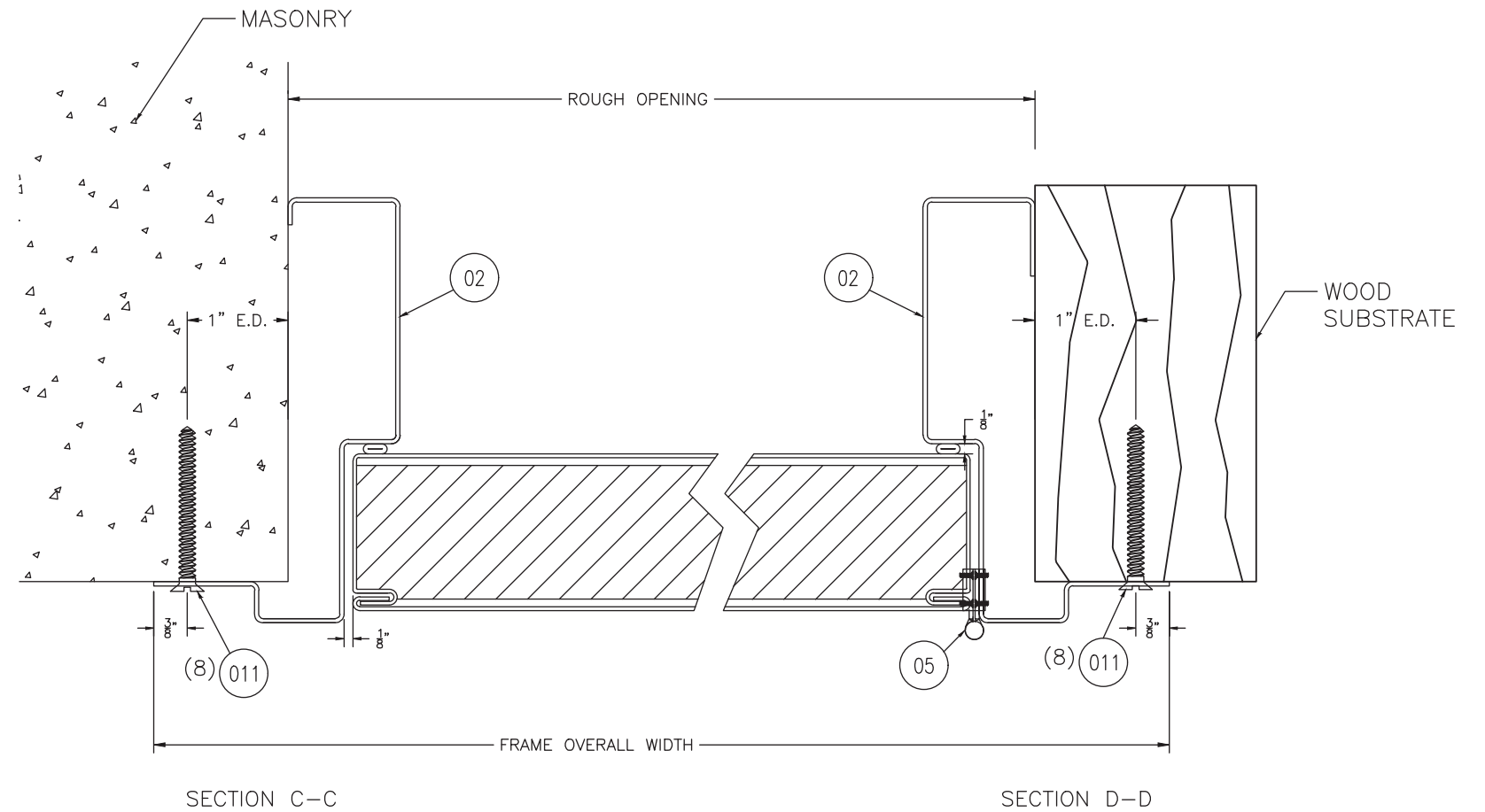
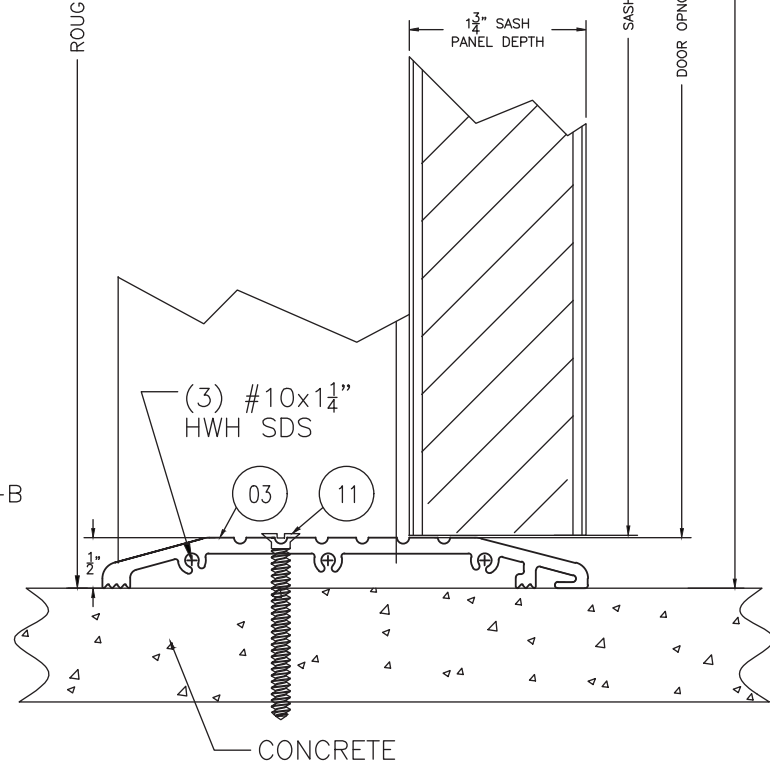
THIS DOCUMENT IS THE PROPERTY OF SPECTRUM BRANDS, INC. AND/OR ITS AFFILIATES. THE CONTENTS OF THIS DOCUMENT ARE CONFIDENTIAL AND CONSTITUTE TRADE SECRETS PROPRIETARY TO SPECTRUM BRANDS. NEITHER THIS DOCUMENT NOR ITS CONTENTS SHALL BE DISCLOSED TO ANY UNAUTHORIZED PERSON, COPIED, OR PUBLISHED WITHOUT SPECTRUM BRANDS' PRIOR WRITTEN CONSENT.

DRAFTER	DATE	TELL DOORS & WINDOWS, LLC. 6535 GUHN RD, STE 100, HOUSTON, TX 77040	
CHECKED	DATE	TITLE "TELSTAR/TIOGA/SPARTAN" OS STEEL DOORS SYSTEM-N.I.	
ENGINEER	DATE	SIZE B	DWG NO 15-35
APPROVED R.J.A.	DATE 10/17/23	RELEASE STATE FINAL	REV B
THIRD ANGLE PROJECTION		SCALE 1/2"=1'-0"	SHEET 2 OF 9

SECTION A-A



SECTION B-B



**TYPICAL ANCHORS AT HEAD/JAMB/SILL:**

**#8 DIA. SMS**

INTO 2BY WOOD BUCKS OR WOOD STRUCTURES  
1-1/2" MIN. PENETRATION INTO WOOD

**3/16" DIA. ITW TAPCON (Fu=125 KSI, Fy=100 KSI)**

INTO 2BY WOOD BUCKS OR WOOD STRUCTURES

DIRECTLY INTO fc'=3000 PSI CONCRETE, 1" MIN. EDGE DIST.  
1" MIN. EMBED INTO CONCRETE (HEAD/JAMBS/SILL)

**3/16" DIA. ELCO ULTRACON (Fu=177 KSI, Fy=155 KSI)**

INTO 2BY WOOD BUCKS OR WOOD STRUCTURES  
1-1/2" MIN. PENETRATION INTO WOOD

DIRECTLY INTO fc'=3000 PSI CONCRETE, 1" MIN. EDGE DIST.

DIRECTLY INTO fc'=2000 PSI MASONRY BLOCK, 1" MIN. EDGE DIST.

1-3/8" MIN. EMBED INTO CONCRETE (HEAD/JAMBS/SILL)

1-1/4" MIN. EMBED INTO GROUT FILLED BLOCK (JAMBS)

Robert J. Amoruso, P.E.  
Florida P.E. No. 49752



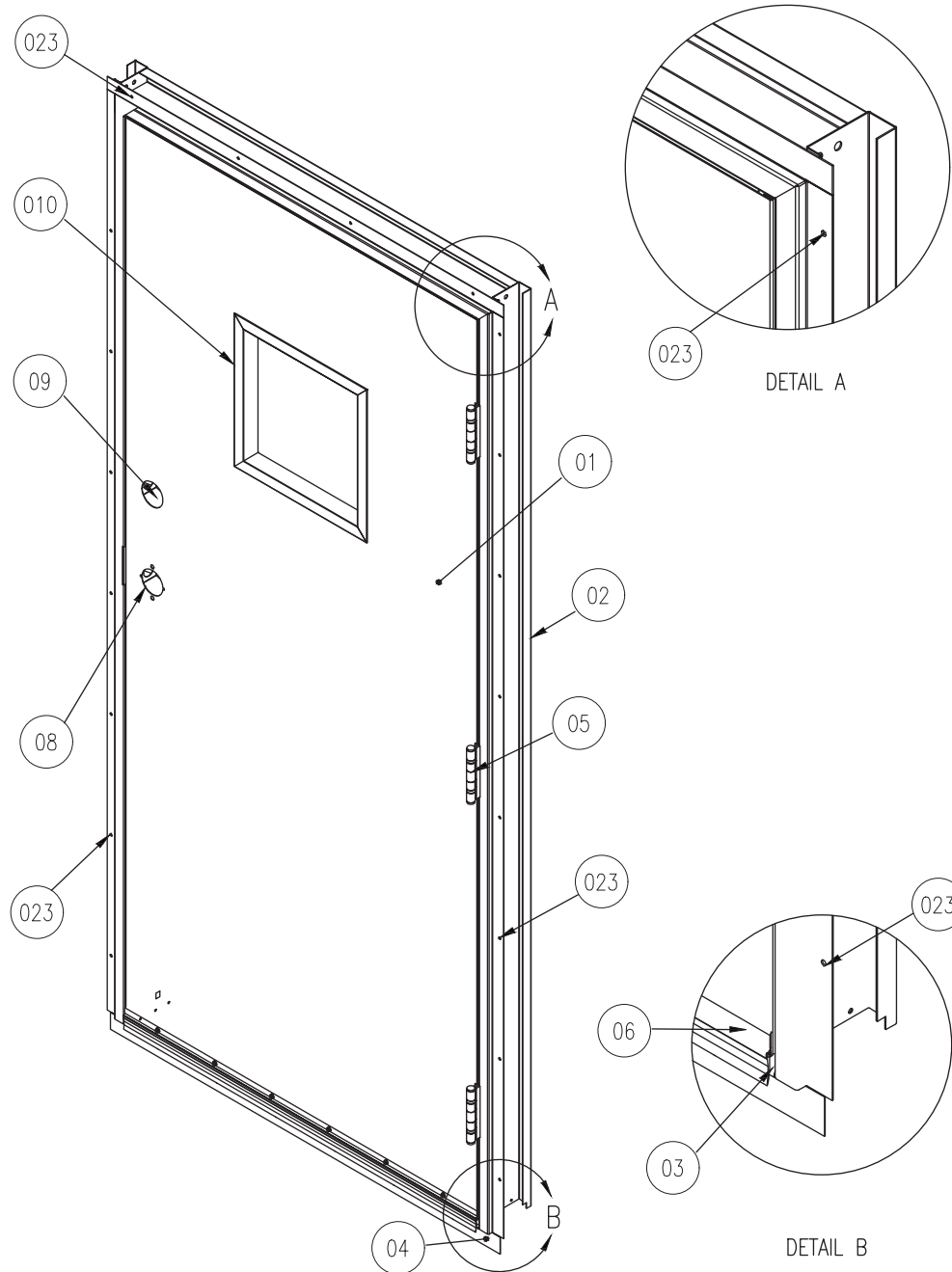
PTC PRODUCT DESIGN GROUP, LLC  
PO BOX 520775 | LONGWOOD, FLORIDA 32752  
FBPE C.A. NO. 25935  
Phone: 321.690.1788 | Email: info@ptc-corp.com

TELL MANUFACTURING, INC.  
18 RICHARD DRIVE, LITITZ, PA 17543



THIS DOCUMENT IS THE PROPERTY OF SPECTRUM BRANDS, INC AND/OR ITS AFFILIATES. THE CONTENTS OF THIS DOCUMENT ARE CONFIDENTIAL AND CONSTITUTE TRADE SECRETS PROPRIETARY TO SPECTRUM BRANDS. NEITHER THIS DOCUMENT NOR ITS CONTENTS SHALL BE DISCLOSED TO ANY UNAUTHORIZED PERSON, COPIED, OR PUBLISHED WITHOUT SPECTRUM BRANDS' PRIOR WRITTEN CONSENT.

DRAFTER	DATE	TELL DOORS & WINDOWS, LLC. 6535 GUHN RD, STE 100, HOUSTON, TX 77040	
CHECKED	DATE	TITLE "TELSTAR/TIOGA/SPARTAN" DS STEEL DOORS SYSTEM-N.I.	
ENGINEER	DATE	SIZE B	DWG NO 15-35
APPROVED R.J.A	DATE 10/17/23	RELEASE STATE FINAL	REV B
THIRD ANGLE PROJECTION 	SCALE 1/2"=1'-0"	SHEET 3 OF 9	



ITEM No.	PART NUMBER	DESCRIPTION	MATERIAL	QTY.
01	MMD20102	DHM 3068 20GA 161 DB	-	1
02	MMD30302	TELSTAR DOOR FRAME HEADER/JAMBS 2.76" x 4.75" x 0.054" THK. 16GA	GALVANNEAL STEEL	1
03	MMD10202	THRESHOLD 0.53" x 4.80" x 0.152" THK. 36" TP	6063-T5 ALUMINUM	1
04	MMD40103	FLASHING STRIP 36" TP	-	1
05	HG100034	HINGE 4-1/2" x 4-1/2"	GALVANNEAL STEEL	3
06	MMD10203	DOOR SWEEP 0.61" x 1.35" x 0.083" THK. TP 35.75"	6063-T6 ALUMINUM	1
07	MD100120	WEATHER STRIP LP1153 (16')	GALVANNEAL STEEL	2
08	-	8300 SERIES HEAVY DUTY COMMERCIAL GRADE 1 RIM PANIC W/ KEYED ESCUTCHEON TRIM	STAINLESS STEEL	1
09	-	KEYED LOCK	-	1
010	SD100093	13-1/2" x 13-1/2" L-FRA100 STEEL LOW PROFILE LIGHT KIT BY NATIONAL GUARD PRODUCTS	STEEL	1
011	MSD10006 MSD10033	2 PART ADHESIVE, REZ-CURE EP882 BY INNOVATIVE RASIN SYSTEM, INC.	EPOXY RASIN	2
012	-	STRIKE PLATE	-	1
013	MSD41065	BOTTOM DOOR SKIN 0.40" x 1.72" x .034" THK.	GALVANNEAL STEEL	-
014	MSD41065	TOP DOOR SKIN 0.18" x 0.24" x .035" THK.	GALVANNEAL STEEL	-
015	MMD10205	TOP CAP 0.70" x 1.54" x .038" THK.	GALVANNEAL STEEL	-
016	MSD10223	DOOR CHANNEL 0.80" x 1.67" x .053" THK.	GALVANNEAL STEEL	-
017	MMD10043	DOOR CLOSER REINFORCEMENT 7.00" x 19.50" x 0.070" THK. (15GA) STEEL SHEET	GALVANNEAL STEEL	2
018	MSD10005	FOAM CORE 44.00" x 91.00" x 1.688" THK. - 0.733 LB/FT <sup>3</sup> DENSITY	POLYSTYRENE FOAM	1
019	MSD10027	HINGE REINFORCEMENT 1.25" x 10.00" x 0.180" THK.	COLD ROLLED STEEL	-
020	MSD10091	CYLINDRICAL LOCK REINFORCEMENT 1.65" x 6.69" x 3.80" x 0.054" THK.	COLD ROLLED STEEL	2
021	-	DUST COVER 0.61" x 1.35" x 0.083" THK.	6063-T6 ALUMINUM	-
022	-	#8 x 3/4" PHILLIPS WAFER PAN HEAD SELF DRILLING SCREWS	STEEL	8
023	-	3/16"Ø ITW BUILDEX TAPCON OR ELCO ULTRACON ANCHORS	STEEL	23

DR 3068 PRO DB RHR W/ 10" X 10" OW

Robert J. Amoruso, P.E.  
Florida P.E. No. 49752



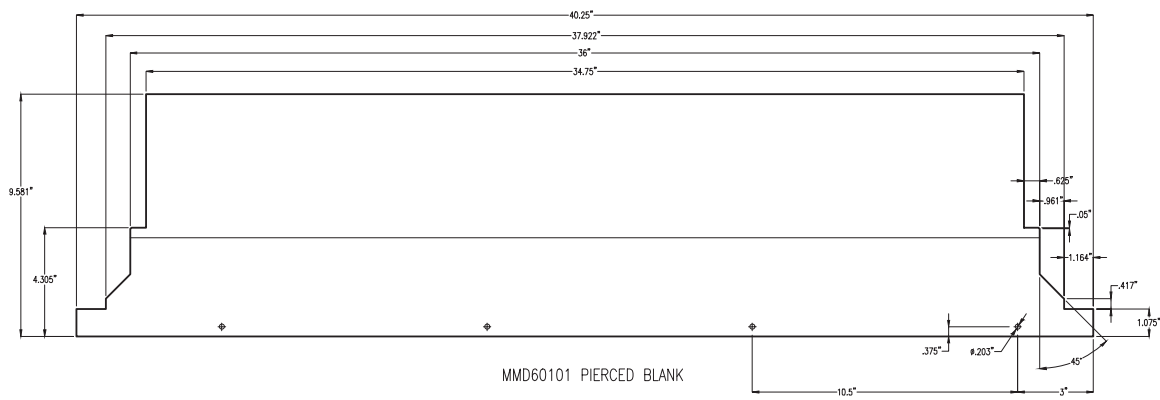
PTC PRODUCT DESIGN GROUP, LLC  
PO BOX 520775 | LONGWOOD, FLORIDA 32752  
FBPE C.A. NO. 25935  
Phone: 321.690.1788 | Email: info@ptc-corp.com

TELL MANUFACTURING, INC.  
18 RICHARD DRIVE, LITITZ, PA 17543

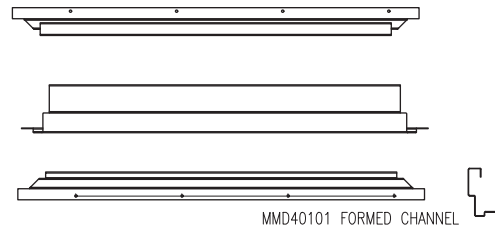
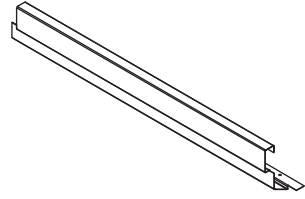


THIS DOCUMENT IS THE PROPERTY OF SPECTRUM BRANDS, INC AND/OR ITS AFFILIATES. THE CONTENTS OF THIS DOCUMENT ARE CONFIDENTIAL AND CONSTITUTE TRADE SECRETS PROPRIETARY TO SPECTRUM BRANDS. NEITHER THIS DOCUMENT NOR ITS CONTENTS SHALL BE DISCLOSED TO ANY UNAUTHORIZED PERSON, COPIED, OR PUBLISHED WITHOUT SPECTRUM BRANDS' PRIOR WRITTEN CONSENT.

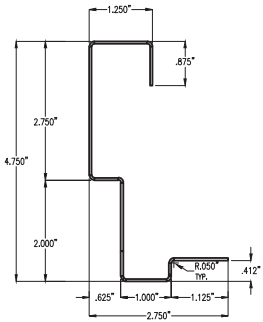
DRAFTER	DATE	TELL DOORS & WINDOWS, LLC. 6535 GUHN RD, STE 100, HOUSTON, TX 77040	
CHECKED	DATE	TITLE "TELSTAR/TIOGA/SPARTAN" DS STEEL DOORS SYSTEM-N.I.	
ENGINEER	DATE	SIZE B	DWG NO 15-35
APPROVED R.J.A	DATE 10/17/23	RELEASE STATE FINAL	REV B
THIRD ANGLE PROJECTION 	SCALE 1/2"=1'-0"	SHEET 4 OF 9	



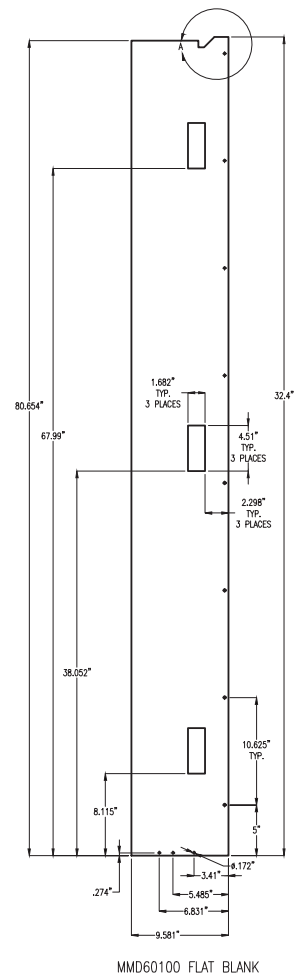
MMD60101 PIERCED BLANK



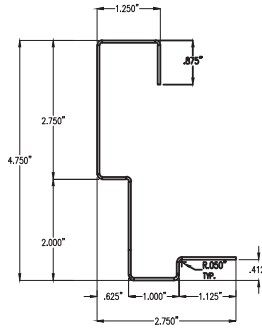
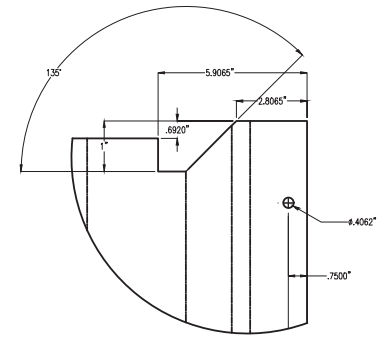
TELSTAR HEADER



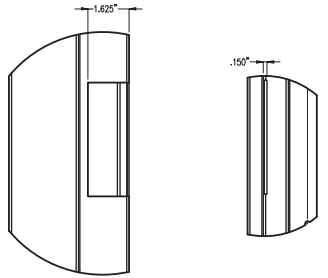
FORMED CHANNEL SECTION



MMD60100 FLAT BLANK

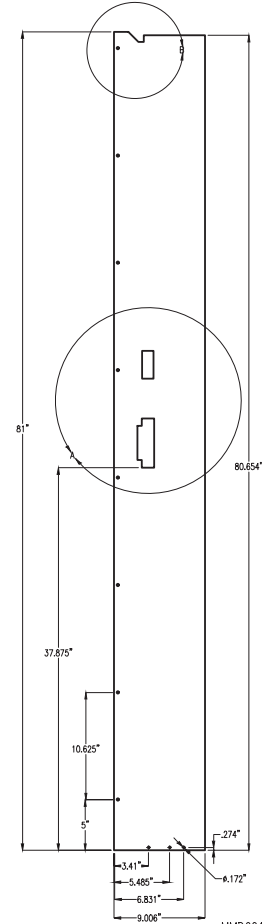


CHANNEL SECTION

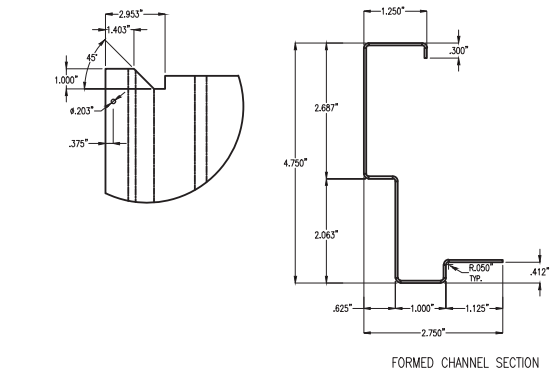


MMD50101 FORMED CHANNEL

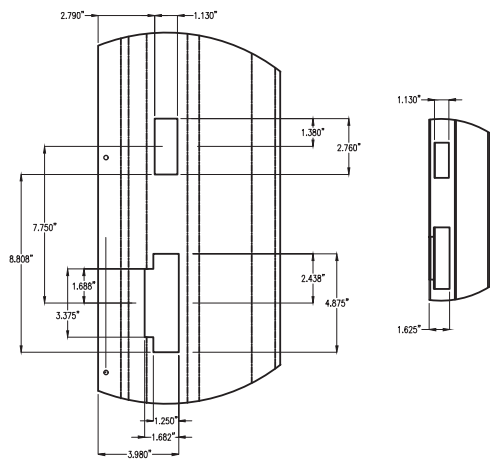
TELSTAR HINGE JAMB



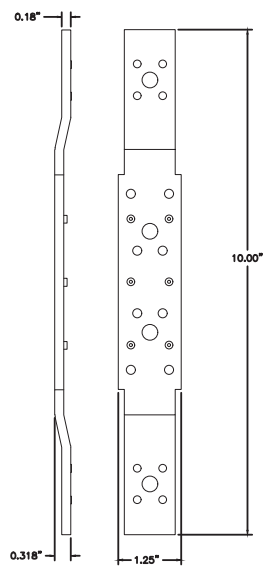
MMD60102 PIERCED FLAT BLANK



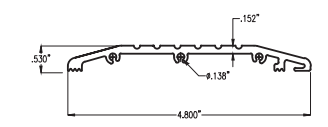
FORMED CHANNEL SECTION



TELSTAR LOCK JAMB



HINGE REINFORCEMENT DOOR AND FRAME 7 GA



TELSTAR THRESHOLD

MMD10202 6063-T5 ALUM. ALLOY

Robert J. Amoruso, P.E.  
Florida P.E. No. 49752

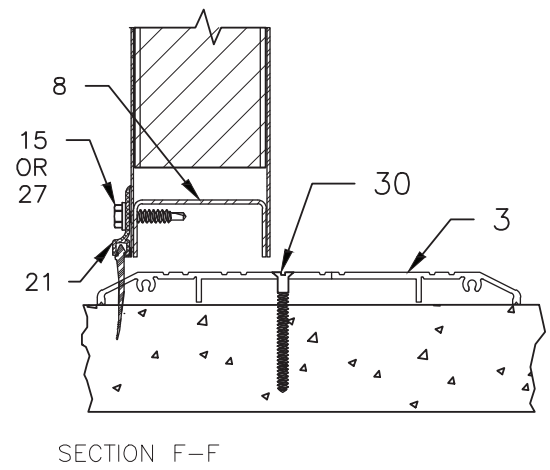
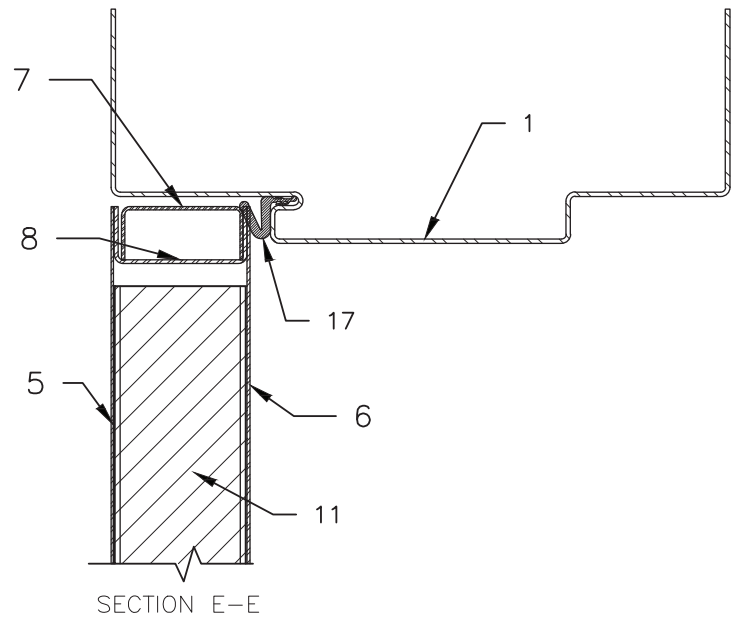
PTC PRODUCT DESIGN GROUP, LLC  
PO BOX 520775 | LONGWOOD, FLORIDA 32752  
FBPE C.A. NO. 25935  
Phone: 321.690.1788 | Email: info@ptc-corp.com

TELL MANUFACTURING, INC.  
18 RICHARD DRIVE, LITITZ, PA 17543

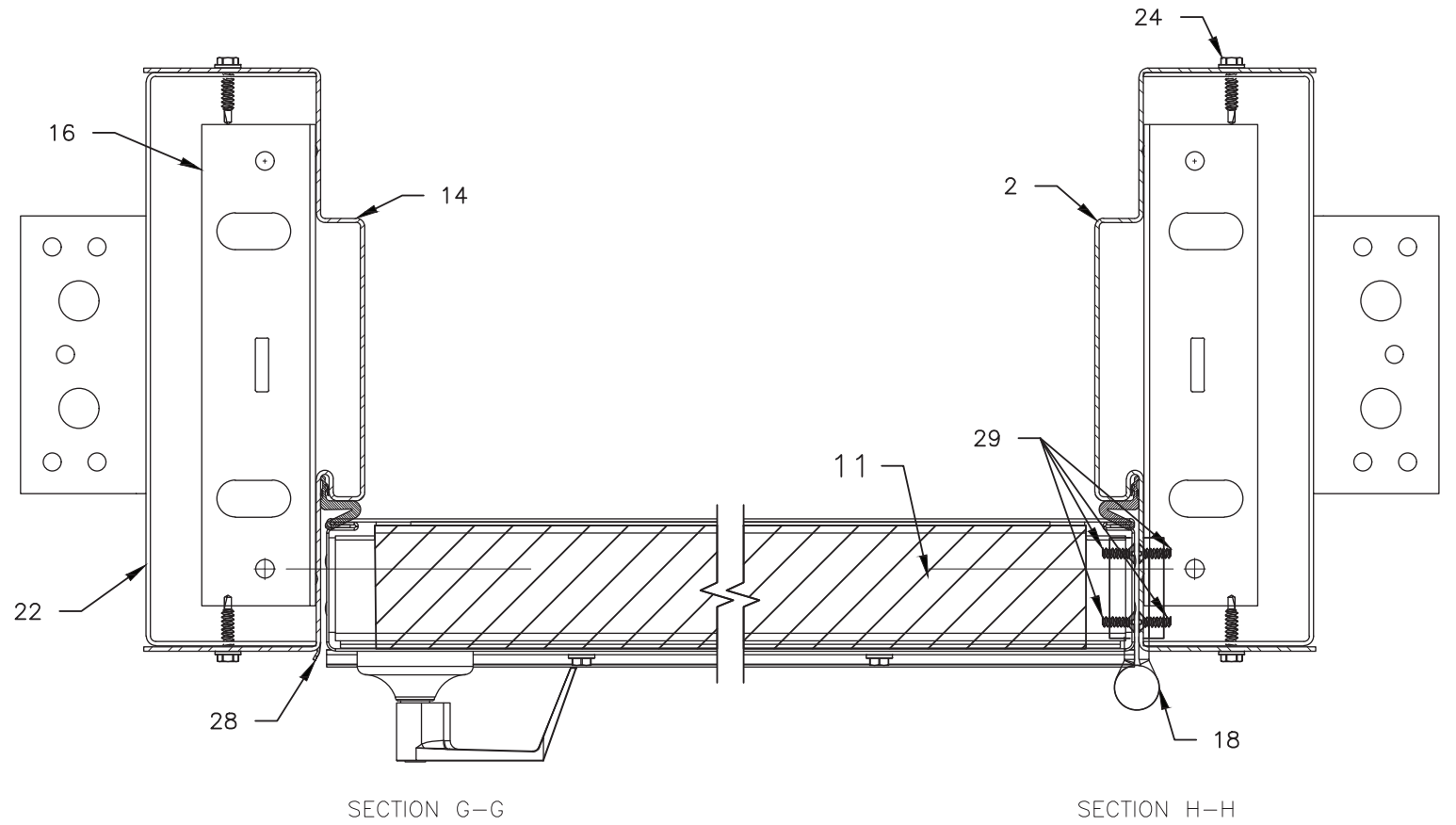
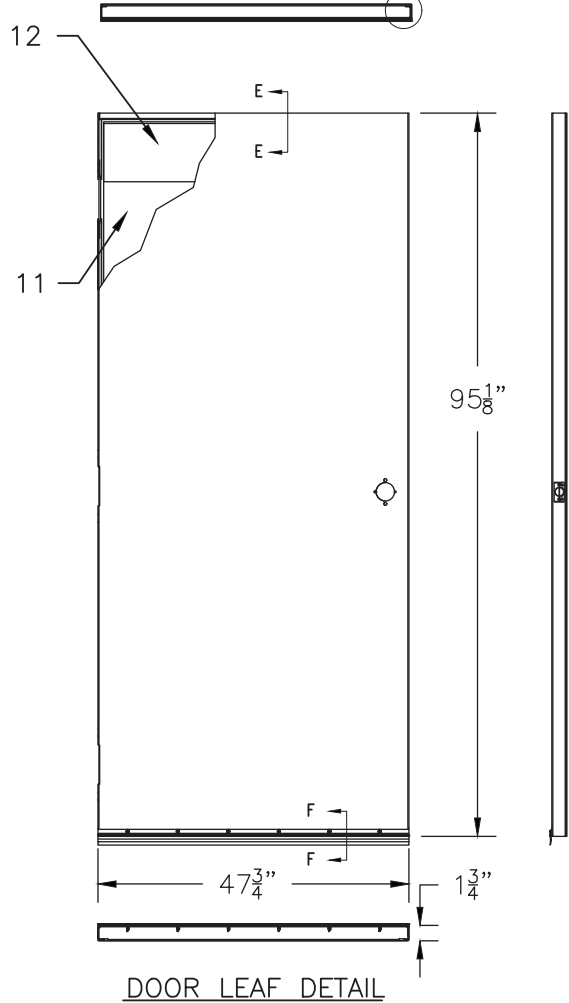
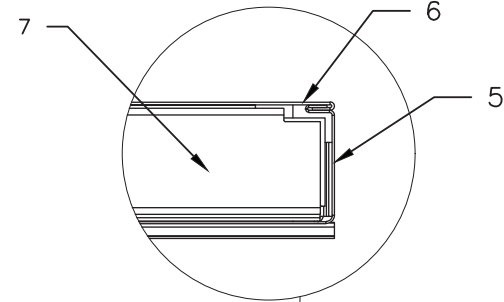
TELL MFG / GA

THIS DOCUMENT IS THE PROPERTY OF SPECTRUM BRANDS, INC AND/OR ITS AFFILIATES. THE CONTENTS OF THIS DOCUMENT ARE CONFIDENTIAL AND CONSTITUTE TRADE SECRETS PROPRIETARY TO SPECTRUM BRANDS. NEITHER THIS DOCUMENT NOR ITS CONTENTS SHALL BE DISCLOSED TO ANY UNAUTHORIZED PERSON, COPIED, OR PUBLISHED WITHOUT SPECTRUM BRANDS' PRIOR WRITTEN CONSENT.

DRAFTER	DATE	TELL DOORS & WINDOWS, LLC. 6535 GUHN RD, STE 100, HOUSTON, TX 77040	
CHECKED	DATE	TITLE "TELSTAR/TIOGA/SPARTAN" DS STEEL DOORS SYSTEM-N.I.	
ENGINEER	DATE	SIZE B	DWG NO 15-35
APPROVED R.J.A	DATE 10/17/23	RELEASE STATE	REV B
THIRD ANGLE PROJECTION 		SCALE 1/2"=1'-0" &bhc_pn_note	ITER FINAL
		SHEET	5 OF 9



VERTICAL CROSS SECTION



HORIZONTAL CROSS SECTION

Robert J. Amoruso, P.E.  
 Florida P.E. No. 49752

PTC PRODUCT DESIGN GROUP, LLC  
 PO BOX 520775 | LONGWOOD, FLORIDA 32752  
 FBPE C.A. NO. 25935  
 Phone: 321.690.1788 | Email: info@ptc-corp.com

TELL DOORS & WINDOWS, LLC.  
 6535 GUHN RD, STE 100, HOUSTON, TX 77040

TITLE  
 "TELSTAR/TIOGA/SPARTAN" DS STEEL DOORS SYSTEM-N.I.

DRAFTER	DATE
CHECKED	DATE
ENGINEER	DATE
APPROVED R.J.A	DATE 10/17/23

SIZE B DWG NO 15-35

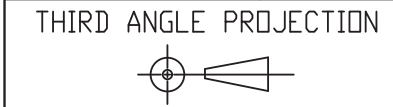
RELEASE STATE FINAL REV B ITER

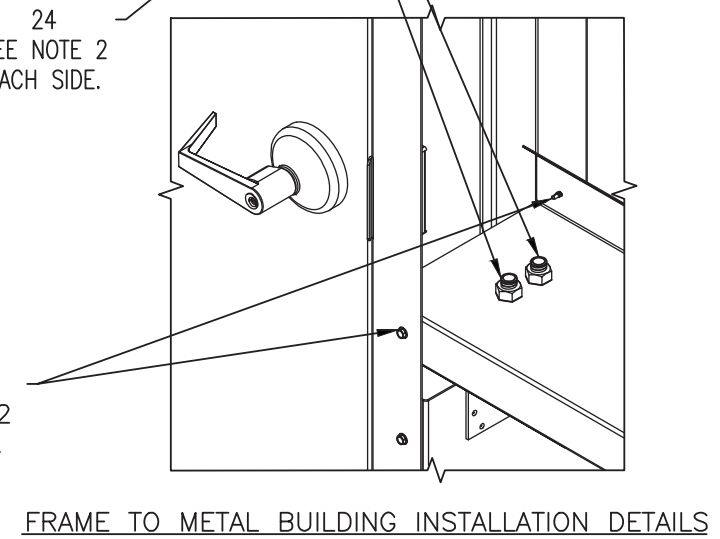
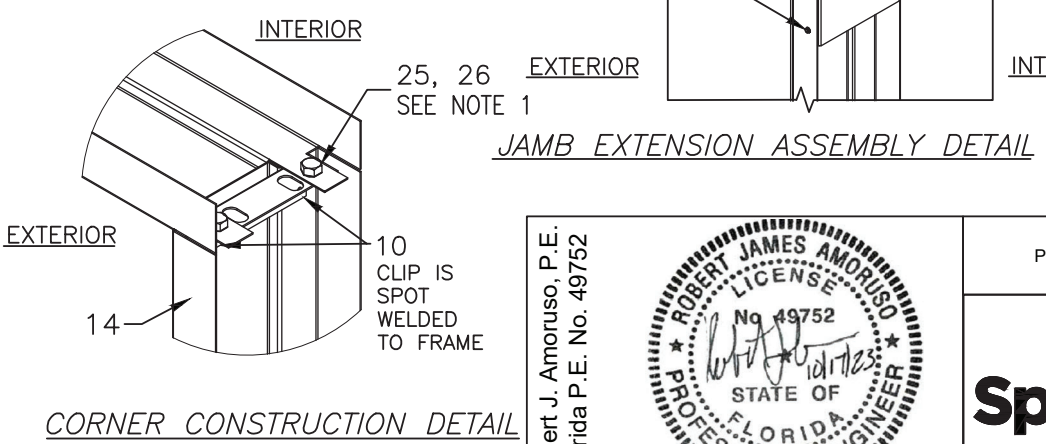
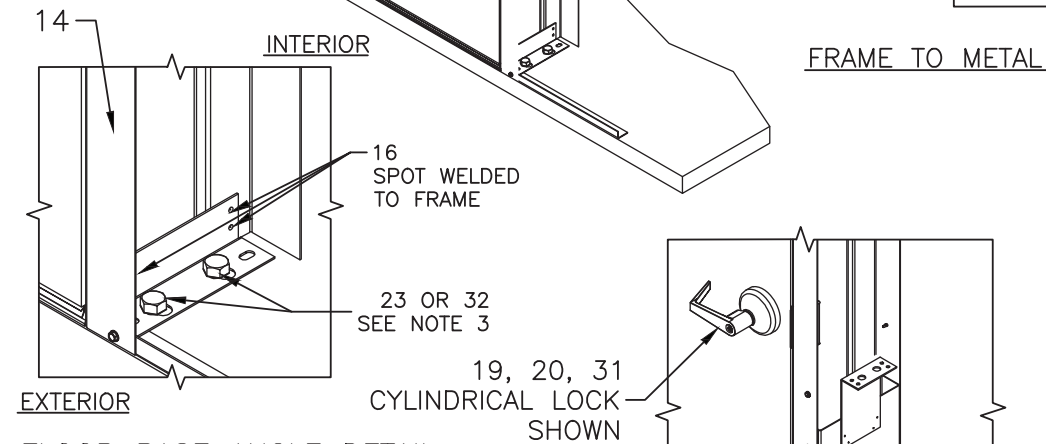
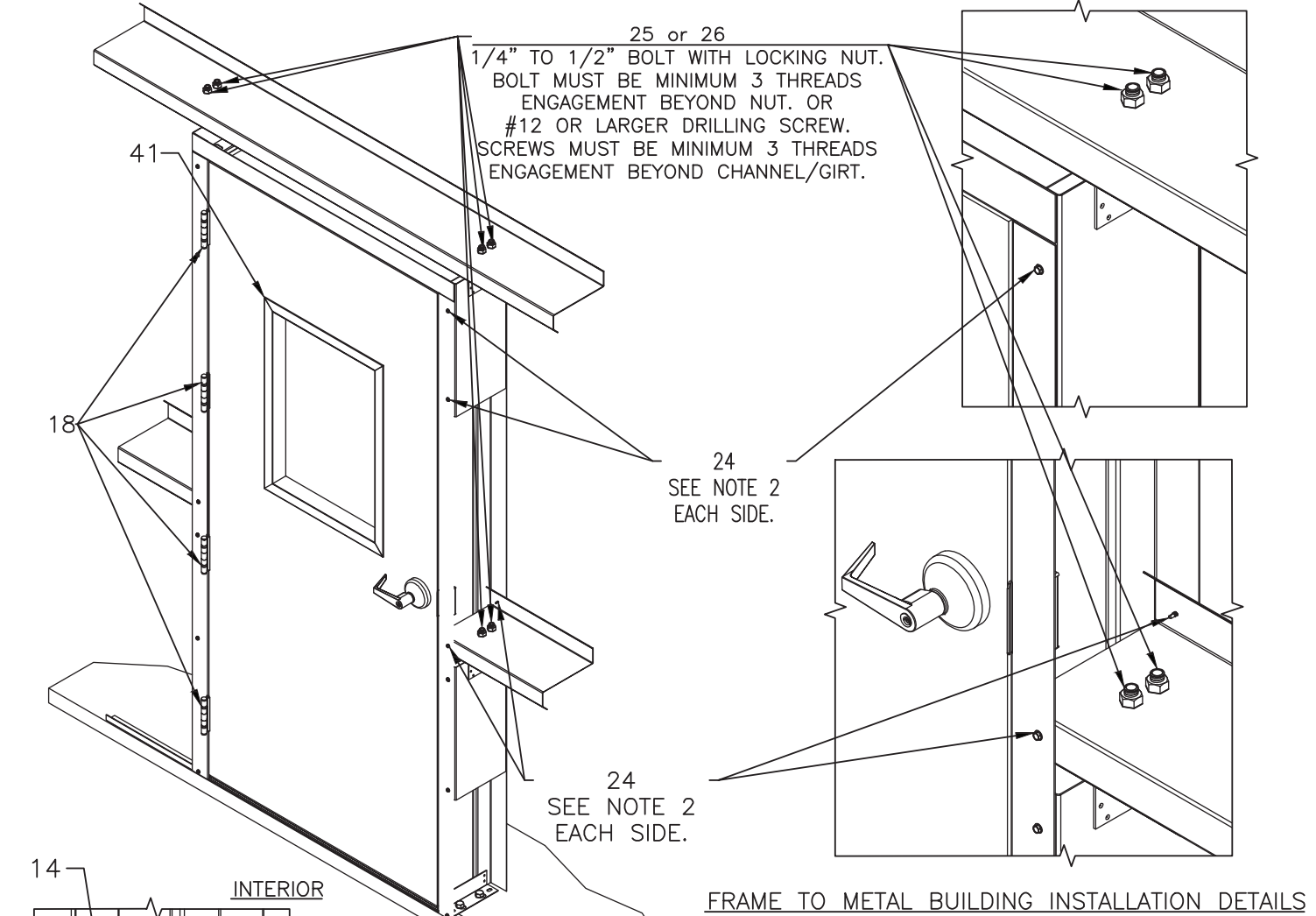
SCALE 1/2"=1'-0" SHEET 6 OF 9

TELL MANUFACTURING, INC.  
 18 RICHARD DRIVE, LITITZ, PA 17543

TELL MFG  
**Spectrum Brands** | Hardware & Home Improvement

THIS DOCUMENT IS THE PROPERTY OF SPECTRUM BRANDS, INC AND/OR ITS AFFILIATES. THE CONTENTS OF THIS DOCUMENT ARE CONFIDENTIAL AND CONSTITUTE TRADE SECRETS PROPRIETARY TO SPECTRUM BRANDS. NEITHER THIS DOCUMENT NOR ITS CONTENTS SHALL BE DISCLOSED TO ANY UNAUTHORIZED PERSON, COPIED, OR PUBLISHED WITHOUT SPECTRUM BRANDS' PRIOR WRITTEN CONSENT.





**NOTES:**

- 1) FOR ANCHORING KNOCK DOWN FRAME HEAD JAMB TO FRAME HINGE JAMB AND FRAME STRIKE JAMB 16GA. (.053" MIN.) STEEL FRAMING USE (2 PER SIDE) 1/4" TO 1/2" DIAMETER STEEL BOLT WITH MATING SELF LOCKING NUT. BOLT TO BE OF SUFFICIENT LENGTH TO ACHIEVE 3-THREADS MINIMUM BEYOND NUT. LOCATE AND ANCHOR AS SHOWN IN CORNER CONSTRUCTION DETAIL.
- 2) FOR ANCHORING JAMB EXTENSION ASSEMBLY TO 16GA. (.053" MIN.) STEEL FRAMING HINGE AND STRIKE JAMBS, USE (4 PER CHANNEL) #12 OR LARGER DRILLING SCREWS OF SUFFICIENT LENGTH TO ACHIEVE 3-THREADS MINIMUM BEYOND ANCHOR CHANNELS. LOCATE AND ANCHOR AS SHOWN IN JAMB EXTENSION ASSEMBLY DETAIL.
- 3) FOR ANCHORING FLOOR BASE ANGLE OF FRAME HINGE AND STRIKE JAMBS ONTO CONCRETE USE (2 PER JAMB) 3/8" TO 1/2" DIAMETER WEDGE BOLTS OF SUFFICIENT LENGTH TO ACHIEVE 2" MINIMUM EMBEDMENT INTO CONCRETE WITH 4 1/2" MINIMUM EDGE DISTANCE OR (2 PER SIDE) 5/16" TO 1/2" DIAMETER HEX WASHER HEAD TAPCON SCREWS OF SUFFICIENT LENGTH TO ACHIEVE 1-3/4" MINIMUM EMBEDMENT INTO CONCRETE WITH 3-3/16" MINIMUM EDGE DISTANCE (ADD WASHER IF NEEDED). LOCATE AND ANCHOR AS SHOWN IN FLOOR BASE ANGLE DETAIL.
- 4) FOR ANCHORING THRESHOLD ONTO CONCRETE USE 3/16" DIAMETER FLAT HEAD TAPCON SCREWS WITH SUFFICIENT LENGTH TO ACHIEVE A 1-3/4" MINIMUM EMBEDMENT INTO CONCRETE WITH 2-5/8" MINIMUM EDGE DISTANCE. LOCATE ANCHORS AS SHOWN IN ELEVATIONS AND INSTALLATION DETAILS.
- 5) INSTALLATION ANCHORS AND HARDWARE SHALL BE INSTALLED IN ACCORDANCE WITH MANUFACTURER'S INSTALLATION INSTRUCTIONS AND SHALL NOT BE USED IN SUBSTRATES WITH STRENGTHS LESS THAN THE MINIMUM STRENGTH SPECIFIED BELOW:  
 A. STEEL FRAMING: 16GA. (.053" MIN.)  
 B. CONCRETE: MINIMUM COMPRESSIVE STRENGTH 3,192 PSI.

ITEM No.	PART NUMBER	DESCRIPTION	MATERIAL	QTY.
1	MSD72232	HEADER FRAME 2.67" x 0.059" THK. 16GA	GALVANNEAL STEEL	1
2	MSD72232	JAMB FRAME 2.67" x 0.059" THK. 16GA	GALVANNEAL STEEL	1
3	DT101126	THRESHOLD 0.50" x 5.75" x 0.105" THK. 48" TP	6063-T5 ALUMINUM	1
4	MSD10027	HINGE REINFORCEMENT 1.25" x 10.00" x 0.180" THK.	COLD ROLLED STEEL	8
5	MSD10290	BOTTOM DOOR SKIN 0.40" x 1.72" x .034" THK.	GALVANNEAL STEEL	1
6	MSD10290	TOP DOOR SKIN 0.18" x 0.24" x .035" THK.	GALVANNEAL STEEL	1
7	MMD10205	TOP CAP 0.70" x 1.54" x .038" THK.	GALVANNEAL STEEL	1
8	MSD10223	DOOR CHANNEL 0.80" x 1.67" x .053" THK.	GALVANNEAL STEEL	2
9	MSD10091	CYLINDRICAL LOCK REINFORCEMENT 1.65" x 6.69" x 3.80" x 0.54" THK. 16GA	COLD ROLLED STEEL	1
10	MSD70048	FRAME CLIP 5.54" x 1.45" x 1.43" x 0.097" THK. 12GA SPOT WELDED TO JAMBS	GALVANNEAL STEEL	2
11	MSD10005	FOAM CORE 44.00" x 91.00" x 1.688" THK. - 0.733 LB/FT <sup>3</sup> DENSITY	POLYSTYRENE FOAM	1
12	MMD10043	DOOR CLOSER REINFORCEMENT 7.00" x 19.50" x 0.070" THK. (15GA) STEEL SHEET	GALVANNEAL STEEL	2
13	MSD10068	MORTISE LOCK REINFORCEMENT 5.00" x 1.50" x 11.93" x 0.067" THK. 15GA	COLD ROLLED STEEL	1
14	MSD72232	KD STRIKE JAMB 4080 MB534 FRAME 2.67" x 0.059" THK. 16GA	GALVANNEAL STEEL	1
15	-	#8 x 1" SELF DRILLING SCREWS (NOT SUPPLIED)	STEEL	6
16	-	HINGE / STRIKE JAMB FLOOR BASE ANGLE CLIP 12GA	GALVANNEAL STEEL	2
17	DT100631	WEATHER STRIP LP1153 (18')	-	1
18	HG100034	HINGE 4-1/2" x 4-1/2"	GALVANNEAL STEEL	4
19	-	MORTISE LOCK HARDWARE OPTION, CL102258 ZHONGSHAN	-	1
20	-	LC1281 SERIES HEAVY DUTY COMMERCIAL GRADE 1 LEVERSET W/ CL100249 BY THASE ENTERPRISES CO. LTD	-	1
21	MMD10203	DOOR SWEEP 0.61" x 1.35" x 0.083" THK. TP 35.75"	6063-T6 ALUMINUM	1
22	-	JAMB EXTENSION ASSEMBLY 16GA CHANNEL, 12GA CLIP	GALVANNEAL STEEL	4
23	-	3/8"Ø TO 1/2"Ø x 2-1/4" DYNABOLT STUD ANCHOR FOR CONCRETE	-	4
24	-	#12 x 1" SELF DRILLING SCREW (NOT SUPPLIED)	STEEL	24
25	-	1/4"Ø TO 1/2"Ø x 3/4" HEX BOLT	STEEL	12
26	-	1/4"Ø TO 1/2"Ø HEX NUT SELF LOCKING STEEL TO MATCH ITEM 25	STEEL	12
27	-	#10 x 1" SELF DRILLING SCREW (NOT SUPPLIED)	STEEL	6
28	-	STRIKE PLATE - TO MATCH HARDWARE OPTION AS SPECIFIED	-	1
29	-	#12 - 24 x 3/8" PHILLIPS FLAT HEAD COUNTERSUNK MACHINE SCREW STEEL, FOR HINGES	STEEL	32
30	-	3/16"Ø x 1-3/4" PHILLIPS FLAT HEAD COUNTERSUNK TAPCON CONCRETE SCREW (NOT SUPPLIED)	STEEL	5
31	-	9500 SERIES HEAVY DUTY COMMERCIAL GRADE 1 RIM PANIC W/ KEYED ESCUTCHEON TRIM	-	1
32	-	5/16"Ø TO 1/2"Ø x 1-3/4" HEX WASHER HEAD TAPCON CONCRETE SCREW (NOT SUPPLIED)	STEEL	4
33	MSD10061	HINGE REINFORCEMENT COVER 1.66" x 0.84" x 10.13" x 0.024" THK.	COLD ROLLED STEEL	4
34	MSD10090	STRIKE PLATE REINFORCEMENT 1.38" x 6.50" x 1.13" x 0.059" THK. 16GA	COLD ROLLED STEEL	1
35	MSD10006 MSD10033	2 PART ADHESIVE, REZ-CURE EP882 BY INNOVATIVE RASIN SYSTEM, INC.	EPOXY RESIN	2
36	DT100852	BUTTERFLY ANCHOR 1.58" x 2.50" x 7.00" x 0.048" THK.	COLD ROLLED STEEL	4
37	SD100081	ANCHOR 0.95" x 2.05" x 7.00" x 0.052" THK.	COLD ROLLED STEEL	4
38	-	1/4" x 3/4" HEX HEAD MACHINE BOLTS (HH MB) AND LOCK NUTS THRU FRAME CLIPS	STEEL	2
39	-	#8 x 3 1/2" NAILS	STEEL	8
40	-	3/8" x 6" WOOD LAG BOLT	STEEL	4
41	SD101546	25" x 31" WHITE IG INSULATED GLASS UNIT LITE KIT BY NATIONAL GUARD PRODUCTS	STEEL	1

**TIOGA/SPARTAN SERIES SINGLE STEEL DOOR SYSTEM**

**TELL MANUFACTURING, INC.**  
 18 RICHARD DRIVE, LITITZ, PA 17543

PTC PRODUCT DESIGN GROUP, LLC  
 PO BOX 520775 | LONGWOOD, FLORIDA 32752, Phone: 321.690.1788 | Email: info@ptc-corp.com  
 FBPE C.A. NO. 25935



THIS DOCUMENT IS THE PROPERTY OF SPECTRUM BRANDS, INC. AND/OR ITS AFFILIATES. THE CONTENTS OF THIS DOCUMENT ARE CONFIDENTIAL AND CONSTITUTE TRADE SECRETS PROPRIETARY TO SPECTRUM BRANDS. NEITHER THIS DOCUMENT NOR ITS CONTENTS SHALL BE DISCLOSED TO ANY UNAUTHORIZED PERSON, COPIED, OR PUBLISHED WITHOUT SPECTRUM BRANDS' PRIOR WRITTEN CONSENT.

DRAFTER	DATE	TELL DOORS & WINDOWS, LLC. 6535 GUHN RD, STE 100, HOUSTON, TX 77040	
CHECKED	DATE	TITLE "TELSTAR/TIOGA/SPARTAN" DS STEEL DOORS SYSTEM-N.I.	
ENGINEER	DATE	SIZE B	DWG NO 15-35
APPROVED R.J.A	DATE 10/17/23	RELEASE STATE	REV B
THIRD ANGLE PROJECTION		SCALE 1/2"=1'-0"	SHEET 7 OF 9

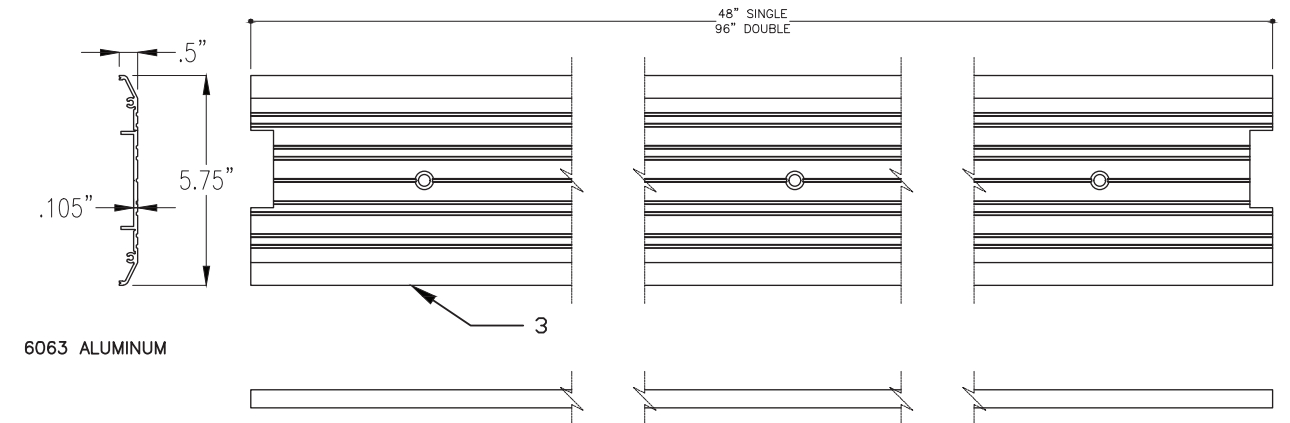
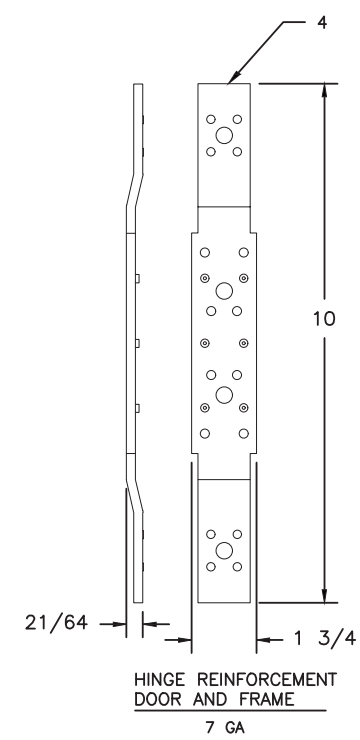
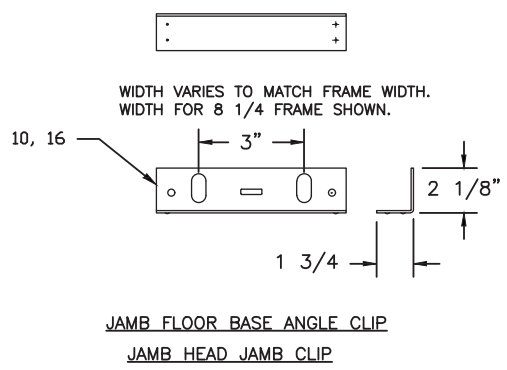
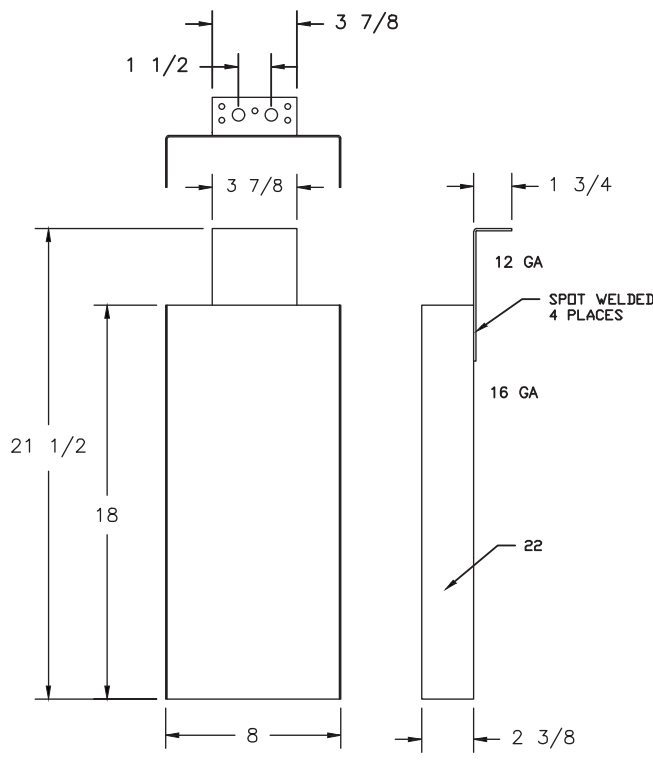
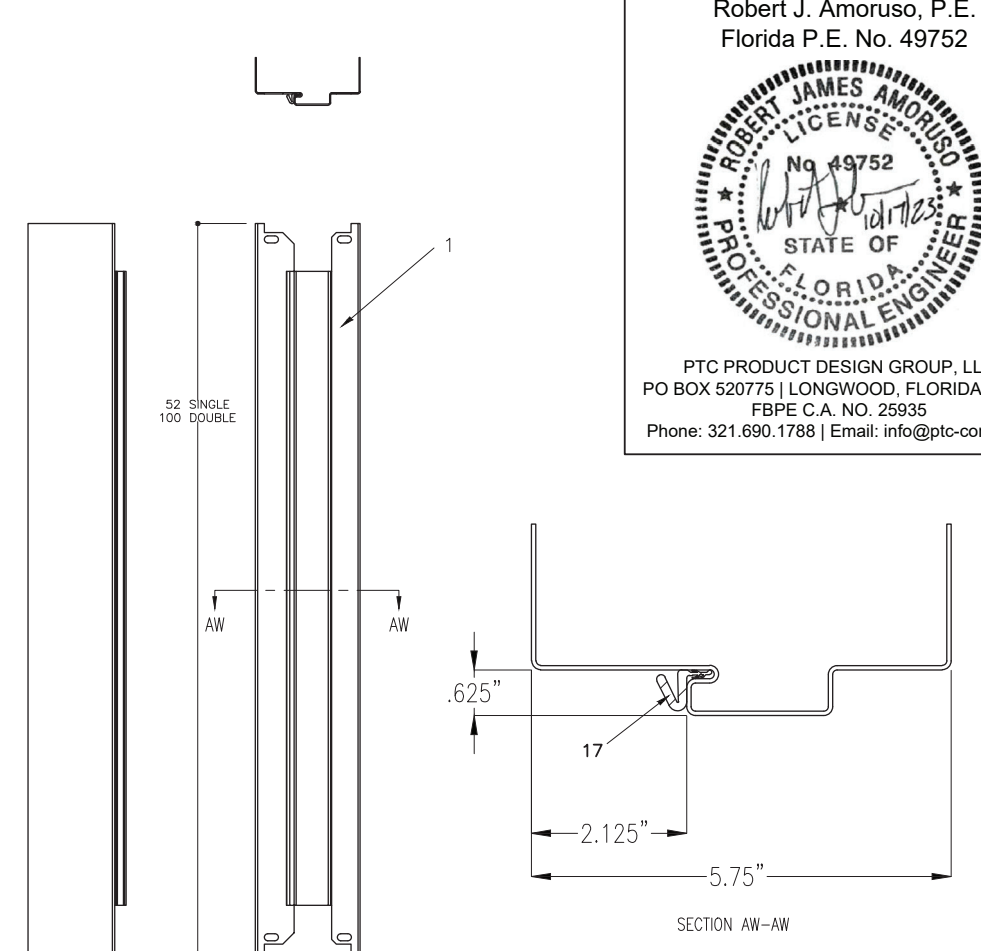
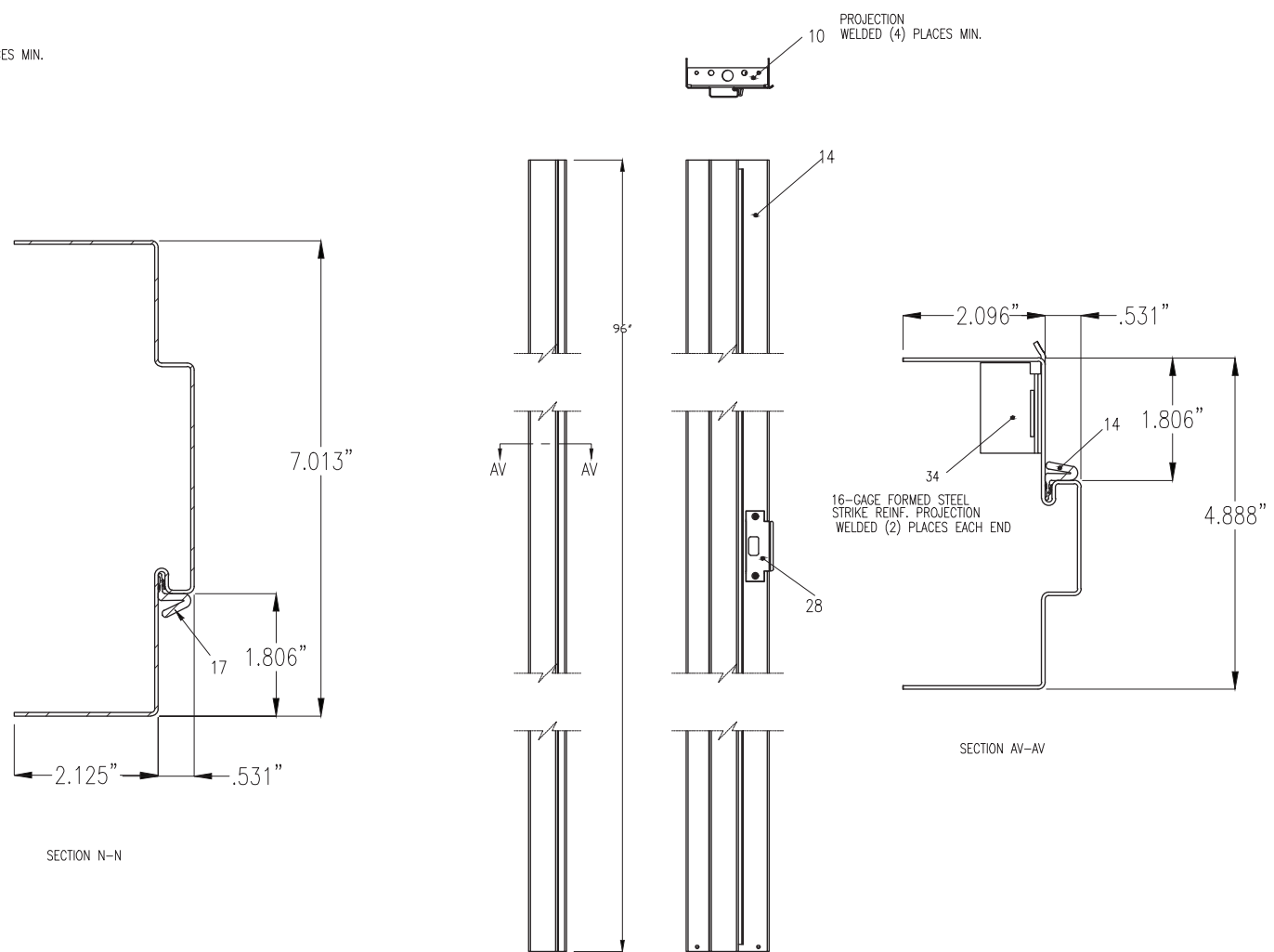
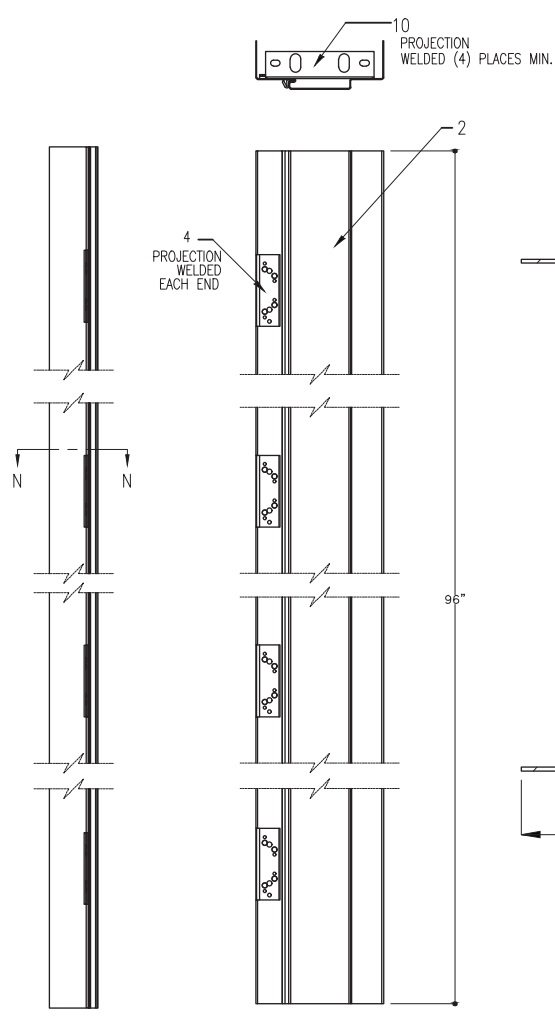


Robert J. Amoruso, P.E.  
 Florida P.E. No. 49752

Robert J. Amoruso, P.E.  
Florida P.E. No. 49752



PTC PRODUCT DESIGN GROUP, LLC  
PO BOX 520775 | LONGWOOD, FLORIDA 32752  
FBPE C.A. NO. 25935  
Phone: 321.690.1788 | Email: info@ptc-corp.com



TIOGA/SPARTAN SERIES SINGLE STEEL DOOR SYSTEM

JAMB EXTENSION ASSEMBLY

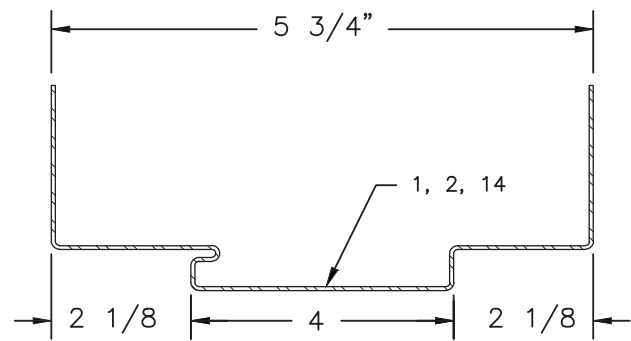
TELL MANUFACTURING, INC.  
18 RICHARD DRIVE, LITITZ, PA 17543



THIS DOCUMENT IS THE PROPERTY OF SPECTRUM BRANDS, INC AND/OR ITS AFFILIATES. THE CONTENTS OF THIS DOCUMENT ARE CONFIDENTIAL AND CONSTITUTE TRADE SECRETS PROPRIETARY TO SPECTRUM BRANDS. NEITHER THIS DOCUMENT NOR ITS CONTENTS SHALL BE DISCLOSED TO ANY UNAUTHORIZED PERSON, COPIED, OR PUBLISHED WITHOUT SPECTRUM BRANDS' PRIOR WRITTEN CONSENT.

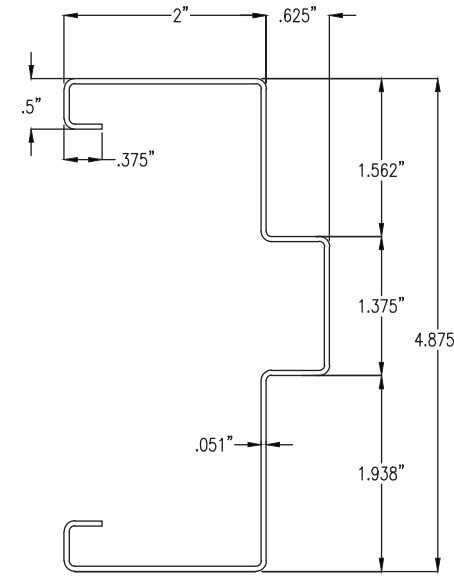
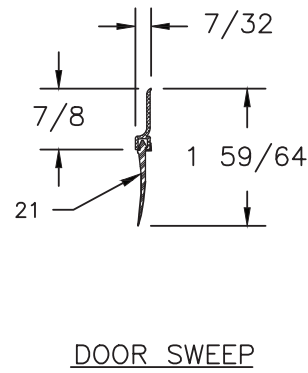
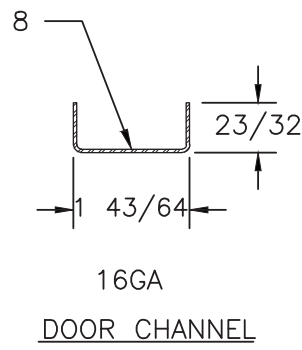
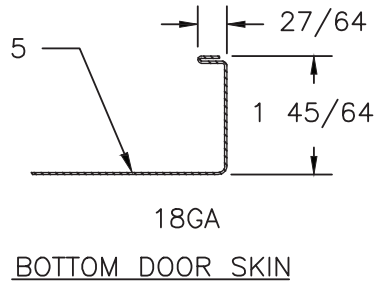
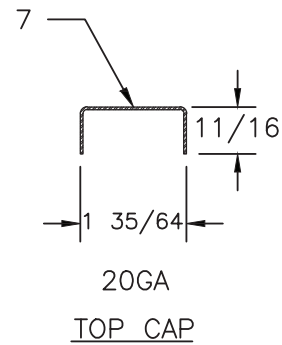
DRAFTER	DATE	TELL DOORS & WINDOWS, LLC. 6535 GUHN RD, STE 100, HOUSTON, TX 77040	
CHECKED	DATE	TITLE "TELSTAR/TIOGA/SPARTAN" DS STEEL DOORS SYSTEM-N.I.	
ENGINEER	DATE	SIZE B	DWG NO 15-35
APPROVED R.J.A	DATE 10/17/23	RELEASE STATE	REV B
THIRD ANGLE PROJECTION 		SCALE 1/2"=1'-0" &bhc_pn_note	ITER 9
		FINAL	SHEET 8 OF 9



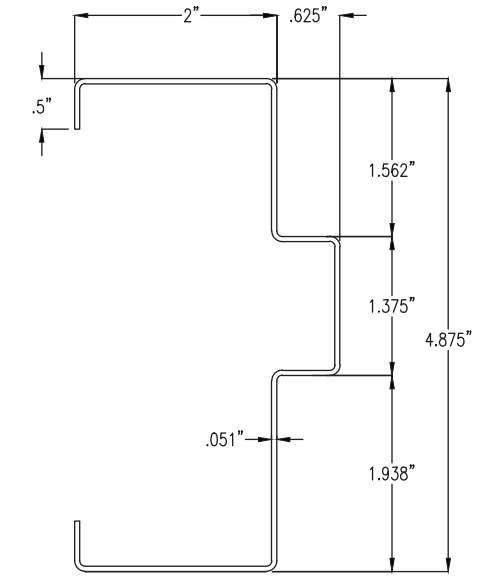


WIDTH VARIES FROM 4 7/8" TO 12 1/4".  
5 3/4" FRAME SHOWN.

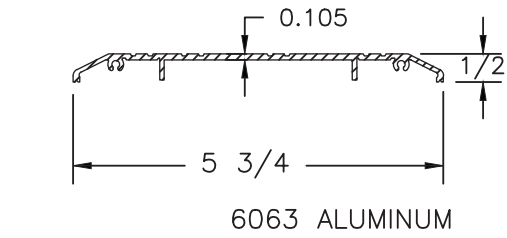
JAMB PROFILE



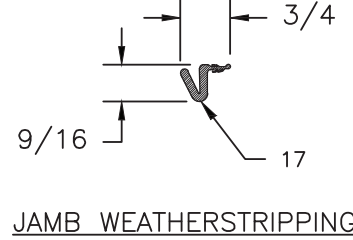
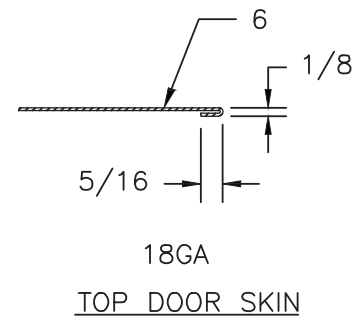
WIDTH VARIES FROM 4 7/8" TO 12 1/4".  
4 7/8" FRAME SHOWN.



WIDTH VARIES FROM 4 7/8" TO 12 1/4".  
4 7/8" FRAME SHOWN.

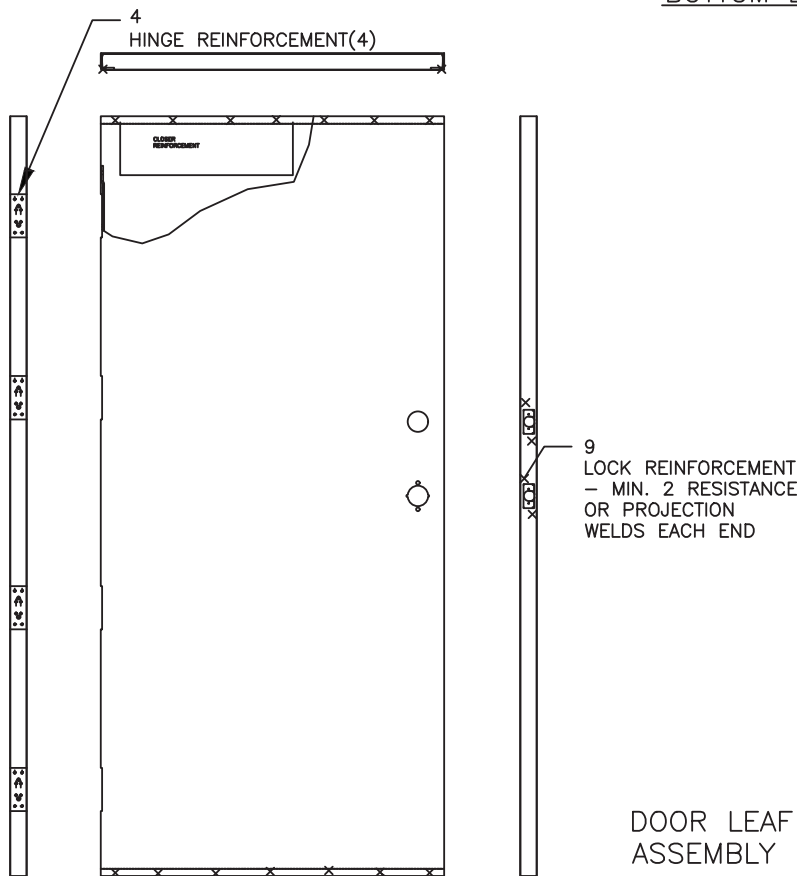


THRESHOLD (0.105" THICKNESS)

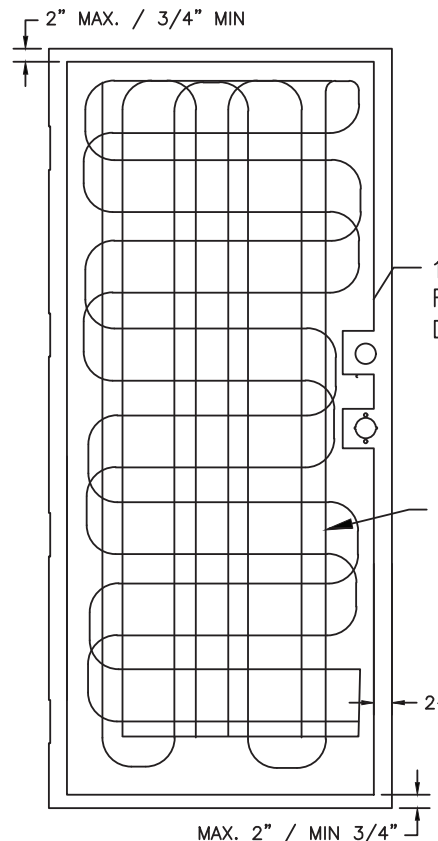


DRYWALL FRAME

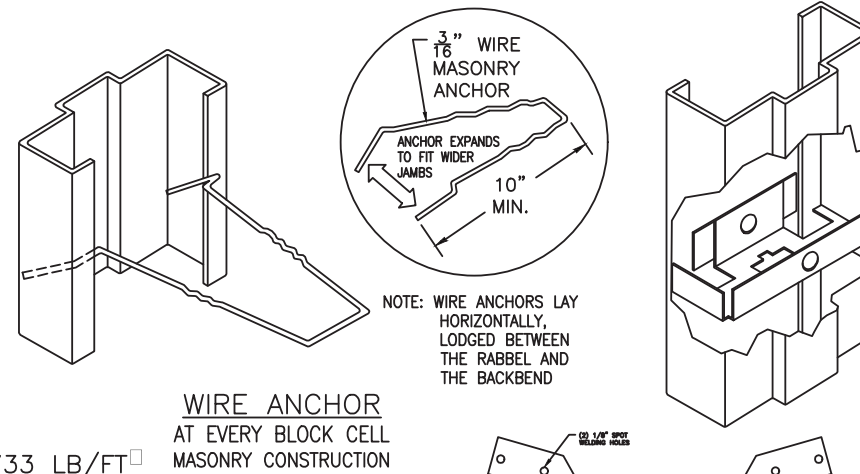
MASONRY FRAME



DOOR LEAF ASSEMBLY



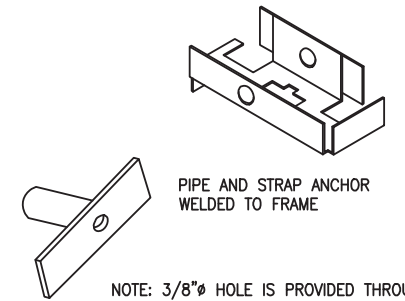
TIOGA/SPARTAN SERIES  
SINGLE STEEL DOOR SYSTEM



NOTE: WIRE ANCHORS LAY HORIZONTALLY, LODGED BETWEEN THE RABBEL AND THE BACKBEND

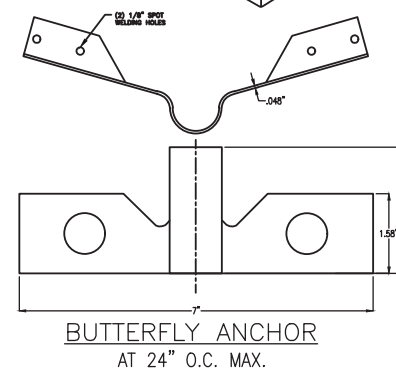
NOTE: COMBINATION ANCHORS USED AS A STEEL STUD ANCHOR  
5-3/4" JAMB WIDTH ONLY  
REMOVE NAILING STRAPS  
INSIDE BREAK-OFF CREASE = 2-1/2" STUD  
OUTSIDE BREAK-OFF CREASE = 3-5/8" STUD

COMBINED ANCHOR  
AT 24" O.C. MAX.  
PUNCH & DIMPLE ANCHORING



NOTE: 3/8" HOLE IS PROVIDED THROUGH FRAME STOP WITH EITHER A COUNTERSINK OR DIMPLE TO RECEIVE ANCHOR BOLTS.

PIPE AND STRAP ANCHOR  
AT 24" O.C. MAX.  
EXISTING MASONRY CONSTRUCTION



BUTTERFLY ANCHOR  
AT 24" O.C. MAX.

SPOT WELD, EACH SIDE, EACH CHANNEL.  
WELD 1-1/2" FROM EDGE, SPACED 3" APART.

TELL MANUFACTURING, INC.  
18 RICHARD DRIVE, LITITZ, PA 17543

TELL MFG  
**Spectrum Brands** | Hardware & Home Improvement

THIS DOCUMENT IS THE PROPERTY OF SPECTRUM BRANDS, INC AND/OR ITS AFFILIATES. THE CONTENTS OF THIS DOCUMENT ARE CONFIDENTIAL AND CONSTITUTE TRADE SECRET'S PROPRIETARY TO SPECTRUM BRANDS. NEITHER THIS DOCUMENT NOR ITS CONTENTS SHALL BE DISCLOSED TO ANY UNAUTHORIZED PERSON, COPIED, OR PUBLISHED WITHOUT SPECTRUM BRANDS' PRIOR WRITTEN CONSENT.

DRAFTER	DATE
CHECKED	DATE
ENGINEER	DATE
APPROVED	DATE
R.J.A. 10/17/23	
THIRD ANGLE PROJECTION	

TELL DOORS & WINDOWS, LLC. 6535 GUHN RD, STE 100, HOUSTON, TX 77040	
TITLE "TELSTAR/TIOGA/SPARTAN" DS STEEL DOORS SYSTEM-N.I.	
SIZE B	DWG NO 15-35
RELEASE STATE	REV B
SCALE 1/2"=1'-0"	SHEET 9 OF 9

Robert J. Amoroso, P.E.  
Florida P.E. No. 49752



PTC PRODUCT DESIGN  
GROUP, LLC  
PO BOX 520775  
LONGWOOD, FLORIDA 32752  
Phone: 321.690.1788  
Email: info@ptc-corp.com  
FBPE C.A. NO. 25935